



Component Serial/Lot Select Installation Guide

Horizons International Manufacturing Suite

*Life Sciences, Batch Processing and High Tech Manufacturing Software
for Microsoft Dynamics GP*

Dynamics GP Version: GP 18.5 (2022)

Horizons Version: HMS 18 89

Latest code (v 89) is only compatible with GP version 18.5 (2022)

CSLS Installation

Overview

Component Serial/Lot Select (CSLS) is only available for HMS users registered for the Enhanced Serial/Lot module.

- If HMS is already installed, you may open the Horizons Registration window (in the 'Setup' section of the Manufacturing homepage. The Enhanced S/L module will be listed as 'Enh S/L'. (NOTE--this is in addition to the basic S/LT module you will also see in your registration window.)
- If HMS is not yet installed, you may look at the registered modules in the email you were sent. 'Enhanced S/L' is listed separately from the basic 'Serial/Lot' window.

If you are certain that you should be registered for Enhanced S/L and you don't see it in your registration, please contact our office – support@hzs.com.

CSLS for GP 11 (2010) requires Dot Net 3.5. To see if this is installed on your workstation, look in Add/Remove Programs (XP) or Programs and Features (Windows 7). To install this version of Dot Net, please visit the Microsoft web site to download it.

CSLS for GP 12 (2013) requires Dot Net 4.0. This is normally installed with Windows 8, but if it is not then the CSLS Install should prompt you to install it during the CSLS Install process. Otherwise, you will need to install it manually.

CSLS for GP 14 (2015) & later requires Dot Net 4.5. This is normally installed with GP, but if it is not then the CSLS Install should prompt you to install it during the CSLS Install process. Otherwise, you will need to install it manually.

If CSLS has been previously installed on the computer, then please uninstall it before installing the new version. It is listed in Windows Control Panel – Programs and Features as Horizons CSLS.

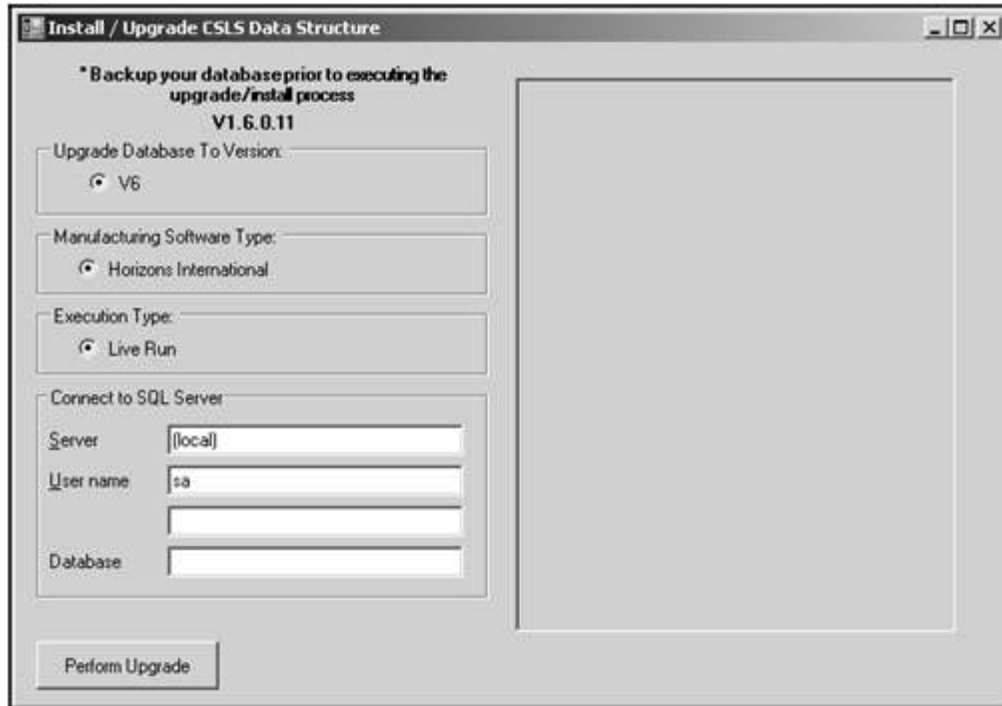
Server

To update the server, unzip the CSLS zip file. Make sure you have the correct version of CSLS for the GP version and Service Pack (sp number). In this zip you will find two more zip files:

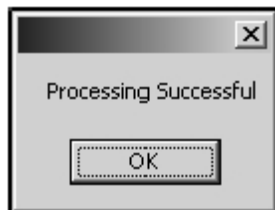
- The CSLS version must match the HMS version. This is the second to the last number in the version. For example in 11.81.01.86, the CSLS version is 1 (01). This

must match the same digit (second to last) in the HMS version - like HMS1181sp1.1.55. The CSLS version is 1 (1.55). Also make sure the first number (the GP version) and the second one (the HMS version) are the same. For HMS 11.81 the CSLS version on the zip file name would be CSLS.....V11.81. To see the current version loaded, go to the Dynamics/AddIns directory and hold your mouse over the ComponentSerialLotSelect.dll. The version is called File Version. This only works with Microsoft Windows Explorer.

- CSLS_AppSetup_xx.xx.xx. This will be used in the next section to install CSLS for every workstation that will be using HMS.
 - CSLS_DatabaseInstaller_xx.xx.xx. Run CSLSInstaller.exe. The Installer is used both for initial installations and for upgrades and only need be run one time on the server. It will create the required stored procedures in the company database, create a HZS_User and grant appropriate permissions. NOTE: The HZS_User is the same user required by the Horizons Quality Essentials Suite and the password is encrypted for security. Do NOT attempt to change the password in SQL or CSLS will not be able to connect to the database.
 - **Multiple Companies** - CSLS can be used for multiple companies without having to have a separate config file for each. Once CSLS is working properly with the first company, simply run the Database Installer on any other company databases that you want to use CSLS with. When logging into another company than the one set in the config file, CSLS automatically pulls the required information for that company.
1. Unzip the CSLS Database Installer to a directory on your workstation. There are a number of files and dlls, so you may want to create a folder on your desktop for these install files.
 2. Double-click 'CSLSInstaller.exe'.
 3. In the Install/Upgrade CSLS Data Structure window, enter the servername/instance (e.g.Myserver\GP2010), enter the 'sa' password for SQL and enter the company database ID.



4. Click the 'Perform Upgrade' button to launch the process.
5. When the process is complete, a dialog box will appear. (This may take several minutes.) Click OK and then close the Install/Upgrade CSLS Data Structure window.
6. **If you will be using CSLS in more than one GP company (database), follow the above process for each database.**



Workstation

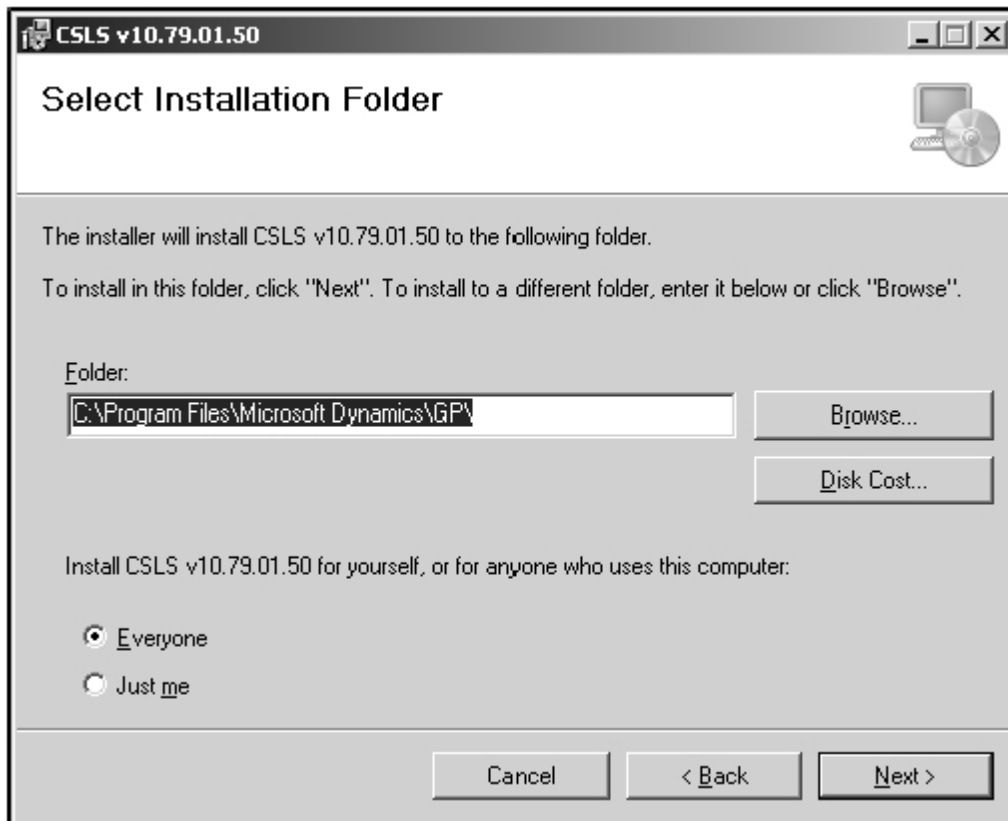
This installation must be done for each workstation that will be using CSLS. It is not necessary to install this on workstations in the organization that will NOT be using CSLS or posting manufacturing transfers.

If CSLS is already installed on the computer you may get an error when running the AppInstall that a version of CSLS is already installed. You must then go to Control Panel -

Programs and uninstall 'Horizons CSLS'. It is a good idea to uninstall the previous version regardless. Afterwards, proceed with the installation as follows.

Install the Application

1. Log onto the workstation as an Administrator.
2. Unzip the 'CSLS_AppInstall_xx.xx.xx' files to a directory on the workstation.
3. Double-click the 'setup.exe' to launch the installation. You might be prompted to install the latest version of Windows Installer. That process must complete before continuing with the CSLS install. This might entail a re-boot of the machine.
4. The CSLS Setup wizard will start. Click 'Next'. Click 'Next' again.
5. The standard path for Dynamics GP will default. If needed, use the browse button to change the directory where Dynamics GP is installed on the workstation. You must choose the same location as the dynamics.exe.



6. Click Next. The installation will begin.

7. When the installation is complete, click 'Close' on the Installation Complete window.
8. Verify that the files and dlls are in the correct locations:
 - A Number of dlls will have been installed in the AddIns directory.
 - Two files at the root of Dynamics GP: AppHelper.dll and IdeaBlade.ibconfig

Set the source

1. Open IdeaBlade.ibconfig in the Dynamics root directory using notepad or another test editor.
2. The section that controls the connections for CSLS is 'rdbkey' underneath the </logging> section. There are two of them listed. Make sure they are both updated to the same values.
3. Change the Data Source= to your SQL Server Instance. If your instance name is (local), enter just the name of the computer. That is found on the 'My Computer' window - right click on 'My Computer' and choose properties.

Example:

```
<rdbKey name="HZS" databaseProduct="Unknown">
<connection>Data Source=HMS_Server\GP_11</connection>
<probeAssemblyName>HMS_CSLS_Model</probeAssemblyName>
</rdbKey>
```

```
<rdbKey name="HZSIH" databaseProduct="Unknown">
<connection>Data Source=HMS_Server\GP_11</connection>
<probeAssemblyName>LotMgmtAddIn</probeAssemblyName>
</rdbKey>
```

If you have more than one workstation to install CSLS on, first test that you can connect properly by opening a work order in HMS and select Cpnt S/L Select from the Production Entry Go-To. Note: if you already have work orders in the system that have all been transferred using the original HMS windows, you will not be able to open CSLS. If that is the case, create a new work order, calculate it and then open CSLS. Delete your test work order.

Copy the IdeaBlade.ibconfig that you completed on the first workstation and replace it on each workstation after the Application Installation is complete.

Troubleshooting

Error after logging into GP that CSLS could not be loaded.

This is usually because the entries in the IdeaBlade.ibconfig file are not correct or the Users in SQL Security are not installed correctly, or not at all. Under Security - Users, for each database, delete the HZS_User. Under the Security for the SQL Server - Logins, delete the HZS_User there. If the Login cannot be found or when finished removing the HZS_User, run the Database Installer for CSLS for that database.

A second reason for this error can be that the GP directory does not have write access for the user. CSLS writes debug information to that directory and will give this error if it cannot do so.

Component Serial/Lot Select

Overview

Component Serial/Lot Select (CSLS) is designed for manufacturers that have to manage serials and lots, but whose production process is rapid and usually entails only one transfer to production (WIP). This window is only available for organizations registered for Horizons Manufacturing Suite Serial/Lot module. (To see if you are registered for this module, open the HMS Registration window from the 'Setup' section of the Manufacturing Home page)

When also registered for Horizons Quality Essentials Suite (QES) the CSLS window will show the user all quality attributes associated with the serial or lot to assist in choosing the correct one. Note: these attributes are in QES, not the lot attributes from GP inventory control.

For installation instructions please see [CSLS Installation](#).

The CSLS window is designed for one-click lot selection and transfers. The production location will default from the 'Default final location' field in [Locations Setup](#). When choosing a serial/lot, the user may select all of a particular lot by clicking the 'ALL' button regardless of the quantity required for the work order, or may select only the exact quantity required ('WO' button), or may key in any quantity. When the transfer button is clicked, not only is the transfer completed, but the [Production Finals Entry](#) window is updated so the work order may be posted without further adjustment. If the quantity transferred is greater than the quantity required, the update is automatic. If the quantity transferred is less, then the update will occur only if the option 'Allow Cpnt Serial/Lot Select to under issue' is marked in [WIP Setup](#).

The CSLS window also supports one-step 'un-issuing' of materials. This process is called a 'Return'. When a return is processed, the finals window is updated to reflect the lower usage.

The CSLS window does NOT support overrides for either tracked (serial/lot) or non-tracked items. If you need to be able to post negative in inventory, please use the Dexterity [Production Transfer](#) window instead.

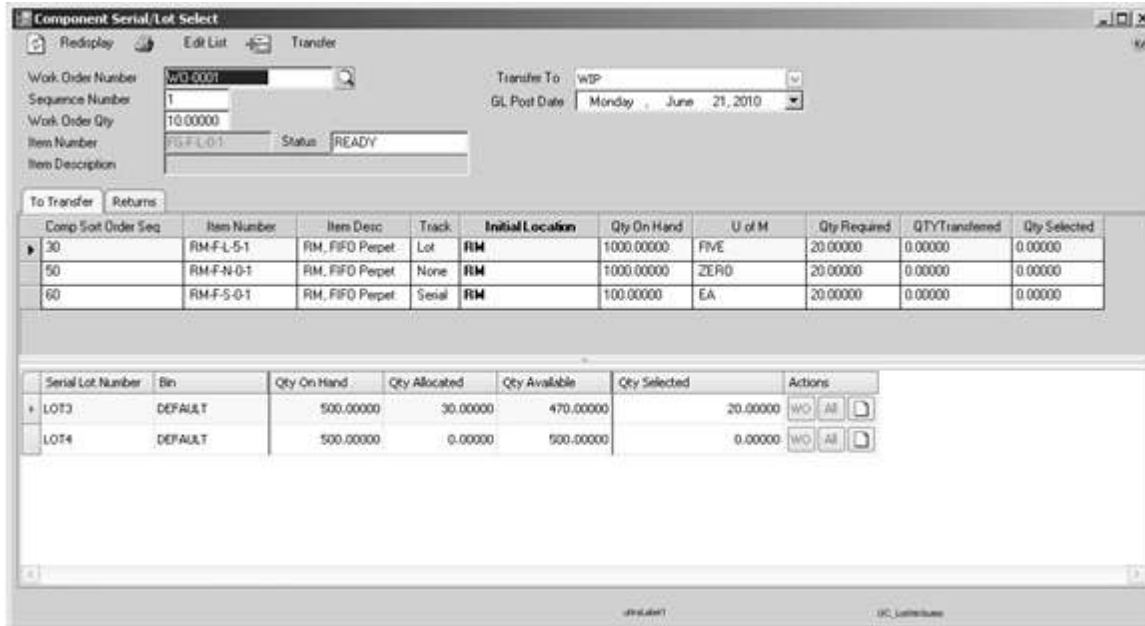
This window does not support Floorstock. If you need to set up items in the [Floorstock](#) window, you will need to use the Dexterity transfer process instead.

Component Serial/Lot Select

This window is written in Dot Net and therefore has additional features not found in standard Dexterity windows in GP:

- Columns in the bottom grids may be re-positioned or re-sized by dragging.
- Columns in the bottom grids may be sorted by clicking in the column header

Technical Reference



Header information

This section is used to select the work order to transfer.

ReDisplay Button

Redisplays the window

Edit List Button

Opens the [Production Serial Lot Reports](#) window.

Transfer Button/Transfer Returns Button

When the 'To Transfer' tab is selected, clicking this button executes the transfer to WIP.
When the 'Returns' tab is selected, the button changes to 'Transfer Returns' and will execute the return.

Work Order Number

Displays the current work order. By using the lookup on this field, the user can switch to another work order.

Sequence Number

Displays the sequence for the work order. A sequence of '2' or higher denotes a work order that has been partially posted.

Work Order Quantity

Displays the work order quantity from the [Production Entry](#) window.

Item Number

For a standard BOM, displays the production item. For a MPP BOM, displays the title of the BOM (the production items can only be seen in the [Multi Product Production](#) window).

Item Description

For a standard BOM, displays the full item description from the GP Item Master.

Status

Displays the status shown on the [Production Entry](#) window.

Transfer To

Displays the site that components will be transferred to when the 'Transfer Button' is clicked. In CSLS, there can only be one production site. Once a transfer has been posted, this field becomes uneditable. It will default to the 'Default Location to Relieve Cpnt Stock' shown in the [Work Order Detail](#) window for standard BOMs, and will default to the 'MPP Partial - Cpnt WIP Location' shown in the [Multi Product Production Setup](#) window for MPP BOMs. It can be changed to another location before the Transfer Button is clicked.

GL Post Date

Defaults to the user date, but may be changed.

To Transfer Tab - Overview

This tab is used to 'issue' components, or transfer components from their initial location to the production location. When a transfer is completed, [Production Finals Entry](#) is updated with the quantities:

Component Serial/Lot Select

- If the quantity transferred is greater than the 'Total Used' quantity showing for the component, then the 'Good Qty' is increased to match the transfer. This occurs regardless of the setting 'Allow Cpnt Serial/Lot Select to under issue' in [WIP Setup](#).
- If the quantity transferred is less than the 'Total Used' quantity and the option 'Allow Cpnt Serial/Lot Select to under issue' is NOT marked, then no update is done to the quantities in Finals, and the work order will not be able to be posted until the under-issued situation is remedied, either by transferring more to production or by manually updating finals.
- If the option 'Allow Cpnt Serial/Lot Select to under issue' is MARKED, then the quantities in Finals will be lowered to match the transfer. There are three quantity buckets in Finals (Planned Scrap, Unplanned Scrap and Good Qty) and they will be reduced in the following order:
 1. Planned Scrap
 2. Good Quantity
 3. Unplanned Scrap

In addition, the bottom grid changes depending on what type of item is chosen in the top grid. If the item chosen is serial or lot tracked, the bottom grid will show any attributes recorded in Horizons Quality Management System (HQMS).

To Transfer Tab - Top Grid

Component Sort Order Sequence

This displays the component sequence number from the work order

Item Number

Displays the component item number

Item Description

Displays the Short Description for the item from GP

Track

Displays if the item is lot tracked, serial tracked or none.

Initial Location

Displays the default initial location for the component as seen in the [Component Work Centers](#) window on the BOM. This field may be changed to transfer a component from a different site.

Qty on Hand

Displays the current available quantity for the component in the selected initial location.

U of M

Displays the U/M for the component.

Qty Required

Displays the quantity needed for the component. This is the 'Total Used' quantity field displayed in [Production Finals Entry](#).

QTY Transferred

Displays the quantity currently in WIP for the component. This is a calculated field: Total Quantity transferred to WIP minus Quantity Returned minus Quantity Posted.

Qty Selected

Displays the quantity selected in the lower grid. Once the transfer is completed, the quantity in this field is set to zero and the QTY Transferred field incremented.

To Transfer Tab - Bottom Grid

Serial/Lot Number

Shows available lots. NOTE: If a lot is fully allocated in GP, it will not show in CSLS such as when HQMS is being used to put received component lots on hold automatically pending inspection. If the item is not serial- or lot-tracked, this field will not be present.

Bin

Displays the bin for the component.

Qty on Hand

Displays the quantity of the item.

Qty Allocated

Displays the quantity currently allocated elsewhere in the system.

Qty Available

Qty on Hand minus Qty Allocated

Component Serial/Lot Select

Qty Selected

Editable field for user to enter the quantity to transfer. Alternatively, the user can use the 'action' buttons to update the Qty Selected field.

Action: WO Button

Updates the Qty Selected field with the quantity required for the work order.

Action: All Button

Updates the Qty Selected field with the entire quantity of the lot/bin regardless of the quantity required by the work order. This is useful for organizations that routinely issue an entire roll or case of a component to stock, use what is needed and then return the remainder to stock.

Note Icon

Once a quantity has been selected for a lot, a note may be attached that will remain visible for users in production. NOTE: This is only available for lot-tracked items.

Returns Tab - Overview

This tab shows what quantities of components are remaining in WIP and are available to return to the initial location (un-issue). When the user returns a component, the [Production Finals Entry](#) window is updated, reducing the quantities in the same fashion as detailed above under the 'To Transfer Tab'.

Returns Tab - Top Grid

Sequence

Displays the component sequence of the item

Item Number

Displays the component item number

Item Description

Displays the Short Description for the item from GP

Track

Displays if the item is lot tracked, serial tracked or none.

Return to Location

Defaults to the initial location for the item from the [Component Work Centers](#) window on the BOM. This field may be changed by the user prior to completing the return.

Qty on Hand

Displays the quantity on hand for the item in the return-to location displayed.

U of M

Displays the U/M for the component.

Qty Required

Displays the quantity needed for the component. This is the 'Total Used' quantity field displayed in [Production Finals Entry](#).

QTY Transferred

Displays the quantity currently in WIP for the component. This is a calculated field: Total Quantity transferred to WIP minus Quantity Returned minus Quantity Posted.

Qty to Return

Displays the quantity selected in the lower grid. Once the return is completed, the quantity in this field is set to zero and the QTY Transferred field decremented.

Returns Tab - Bottom Grid

This section displays the lot/bin quantity available in WIP associated with this work order.

SerialLot Number

Shows the serial or lot. If the item is not serial- or lot-tracked, this field will not be present.

Quantity

Displays the quantity in WIP

Return to Bin

Displays the default bin for the item that the return will update, but the user may select any bin associated with the Return to Location.

Return Qty

User may enter the quantity to return.

Uninstalling CSLS

Removing CSLS from the system

Removing from a workstation

Use Windows Add/Remove programs to remove CSLS. This process will remove all the dlls in the 'AddIns' directory. You will need to manually remove the IdeaBlade.ibconfig file from the Dynamics root folder.

Remove the HZS_User

Follow this procedure ONLY if you do not also have Horizons Quality Management System installed. To see if HQMS is installed, look in SQL--there will be a HZS_System database. If HQMS is installed, you may only uninstall CSLS from the workstation--do not remove the HZS_User.

First delete the HZS_User from all company databases and from HZS_System.

Then delete the HZS_User login from SQL security.